



Background:

Silvapower specialise in the production and supply of biomass fuel to small scale boilers. Most of our operations are in the South Yorkshire Region. We also provide a range of associated services UK wide. Silvapower has been operating successfully for three years. In our first year we supplied around 100 tonnes, second year 800 tonnes and for the year ended March 2007 we expect to deliver approximately 2500 tonnes of biomass fuel.



Customers:

Our customers include Royal Society for the Protection of Birds, Peak District National Park, National Trust, Rotherham Borough Council, Barnsley Metropolitan Borough Council and the Sheffield City Council.

Our Products & Services:

We supply woodchips and woodpellets. We focus on getting this right. We do not sell boilers, chippers, stoves etc. Almost all of our woodchips are billed by the kilowatt hour so the onus is on us to provide the fuel in the most efficient way. Our pellets are delivered by the tonne.



Feed stock procurement :

Our extensive network of suppliers enable us to procure the right feedstock to meet your fuel specification requirements.

Chipping & Storage:

We can chip to G30, G50 and G100 specification. We have outdoor and undercover storage facilities to ensure our chip is clean and at the specified moisture content.



Delivery:

we have a variety of vehicles to meet your delivery requirements. we can deliver 10m³, 20m³, 30m³ and 90m³ loads and we can deliver to above and below ground hoppers.



Contract Chipping:

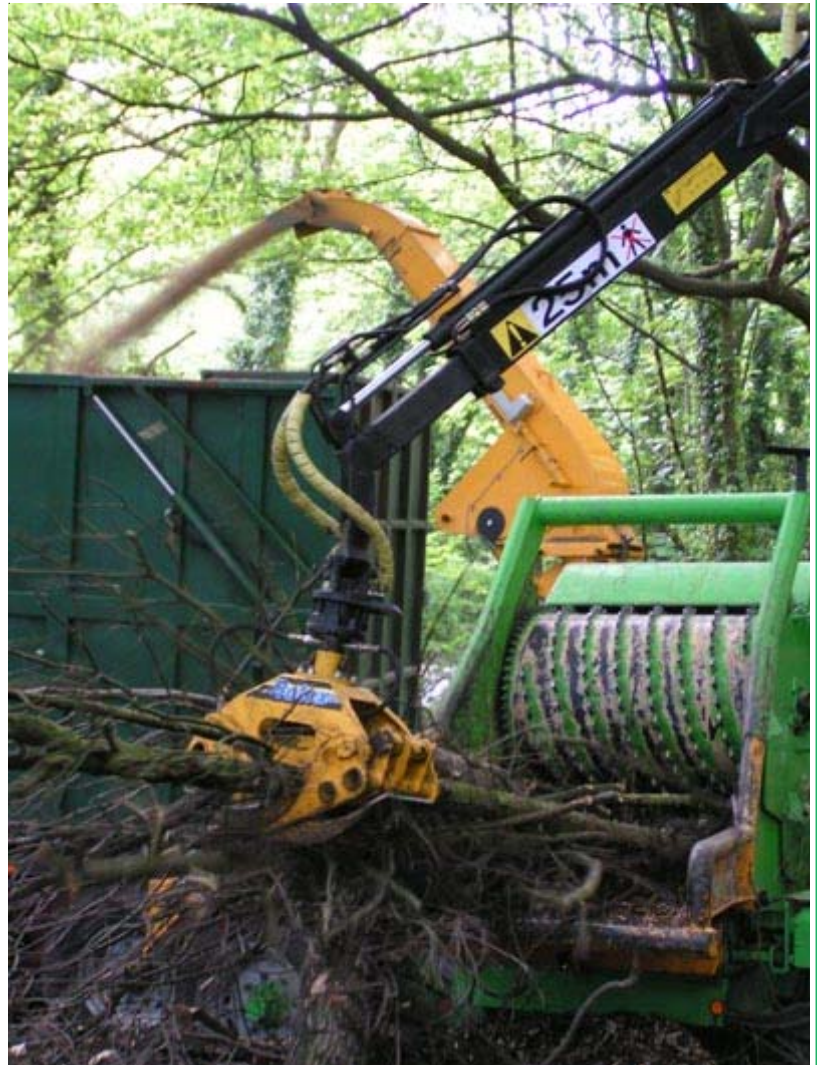
We also provide on site contract chipping services. We can provide chipper operator and crane as well as vehicles and trailers for hauling chip.

Depots:

We deliver from three depots; Chesterfield, Rotherham and Barnlsey – we are looking to open new depots and the next is likely to be nearer Sheffield. We always make sure there is a full contingency for delivery should any problems occur with the primary delivery equipment. This way our customers can expect a reliable supply of fuel.

Equipment:

We run a Heizohack 14800 chipper capable of chipping around 50 to 80 tonnes of feedstock per day. This is powered by a Fastrac 3220 with a Botex crane for feeding. We have a variety of trailers including standard agricultural, hooklift and scissor lift trailers to give us the flexibility to deliver into a variety of different hoppers. All this is backed up by additional equipment including tractors and trailers from our delivery depots.





Quality Control:

Chip and Pellet quality is of paramount importance when it comes to small scale fuel delivery. We have systems in place to assure the quality of our chips.

Suppliers:

Over the years we have developed an extensive network of feedstock suppliers. This means that we are able to source the right quality feedstock as and when new contracts come on line. For larger contracts it is necessary to contract 8 to 12 months in advance of commissioning to enable us to source the right feedstock at the right price and make sure it is sufficiently dry for delivery.

Directors and Stakeholders:

Our board is made up of; Richard Wagstaff, Managing Director ex chartered accountant with experience and a keen interest in woodland management and the wood industry. Ted Talbot, who has worked at senior level in Government Woodland management schemes and now runs a consultancy for Woodland Management and Biomass Fuel Supply. Dave Sefton, Operations Director with 25 years in woodland management and charcoal production.

Our stakeholders include; South Yorkshire Forest Partnership, we work closely with SYFP to help build the network of suppliers and customers in South Yorkshire and to ensure that the growth of the biomass industry in South Yorkshire is a success. South Yorkshire Investment Fund and Yorkshire Bank who support us financially to ensure we have sufficient funds available for future growth requirements. We also have a close working relationship with Sheffield City Council, Barnsley Metropolitan Borough Council, Econergy Ltd, Manco Energy and Mercia Energy.

Our Details:

Silvapower Limited
Rossington Hall Gardens
Great North Road
Rossington
DN110HP

Phone: 01302 867949, Fax: 01302 867949

Email: info@silvapower.co.uk

